



**Windows Safe Logon Solo
Copyright © 2006 SnakeCard, LLC**

USER'S GUIDE

V. 1.0.0

Table of Contents

Introduction.....	3
Systems Requirements.....	3
Installation.....	4
Configuration.....	5
Client Software.....	7
Main Screen.....	7
Enter PIN.....	7
Smart Card lock.....	8
Regular Logon.....	8
Technical Notes:.....	9

Introduction

SnakeCard's Windows Safe Logon Solo “WSLS” is a set of software and Smart Card applications that allows users to personalize and use Smart Cards to logon to their Windows-based PCs in a secure manner.

WSLS is a solution that targets stand alone PCs or peer-to-peer PCs (Workgroup) under the following operating systems:

- Microsoft© Windows^{XP} Home Edition
- Microsoft© Windows^{XP} Pro

The three main components of WSLS are:

1. A Smart Card loaded with a special application
2. A card administration software application
3. A client software application

Systems Requirements

WSLS requires:

1. Microsoft© Windows^{XP} or Microsoft© Windows^{XP} Professional
1. An installed and connected PCSC Smart Card reader

Installation

The following installation procedure details the steps necessary to install WSLS on a “vanilla” Windows^{XP} Pro system with an Omnikey 3121 USB Smart Card reader.

1. Select “Start\Control Panel\Users Accounts” and create as many users as needed as well as their passwords (**up to 32 characters for the user name and the password**). We suggest that you choose a password difficult to reproduce: long, with a mix of digits, lower case and upper case letters. If you are not a single user but the Systems Administrator of the network, you should not give the password to your users: The users should only know their PIN code. A PIN code can be fairly simple as the user also holds the card as an extra security measure.
2. Select “Start\Control Panel\Users Accounts\Change the way users log on or off” and uncheck both “Use the Welcome screen” and “Use Fast User Switching” check box.¹
3. Log out and make sure the two above steps are successful as Windows now should require a user name and a password to log on.
4. Select the correct Omnikey reader driver located in CD folder “Drivers” and double click on it: it will unzip itself into your hard-disk.
5. Insert the Smart Card reader into the PC USB port, when prompted by windows to select a driver choose the advanced option and select the newly unzipped driver.²
6. Make sure that the above was successful by selecting “Start\Control Panel” and selecting the newly installed “Diagnostic Tool” which should now show that one Smart Card reader installed “OMNIKEY CardMan 3x21 0”.
7. Install the configuration application located in the CD folder “WSLS Config” by double clicking on “Setup.exe” and following the default instructions. **Note: the installation might give warnings about components already installed, you may safely ignore these warning and continue the installation.**
8. Select “Start\All Programs\SnakeCard\WinSafe Logon Solo Config” and follow the instructions described in the “Configuration” Chapter.
9. Install the client application located in CD folder “WSLS Client” by double clicking on “WSLS.msi”
10. Reboot your PC and follow the instructions described in the “Client Software” chapter.

1 Please refer to you operating system user's guide for more information

2 For more information on the Smart Card reader installation, please refer to the readme.txt that comes with each driver

Configuration

This chapter describes the procedure to “program” the WSL Smart Cards with the correct PIN and account information.

Note: if you already have installed the client software, you must log in “by hand”³ as the client software will lock your PC if you remove your card from the Smart Card reader.

When launched, the WSL configuration application “ WinSafe Logon Solo Config“ display the windows hereunder. The procedure necessary to program a new card is as follows:

1. Insert the card in the reader.
2. Type into the fields “Enter PIN:” and “Confirm PIN:” the default PIN code “SC1963” (respect the case).
3. Click on the button validate.

3 Please refer to the Client Software section to learn how to logon without the Smart Card

The image shows a Windows application window titled "WinSafeLogonSoloConfig". The window has a blue title bar with a close button in the top right corner. Below the title bar is a menu bar with "File", "View", and "Help" options. The main area of the window is light beige and contains several input fields and a button. The fields are labeled "Enter PIN:", "Confirm PIN:", "Account:", "Password:", and "Confirm Password:". The "Enter PIN:" field has a "Validate" button to its right. At the bottom of the window, there is a status bar with the text "Status", the date "2/18/2006", and the time "4:36 PM".

Enter PIN:	<input type="text"/>	Validate
Confirm PIN:	<input type="text"/>	
Account:		
Password:		
Confirm Password:		

Status | 2/18/2006 | 4:36 PM

The Window should now look something like this⁴:

WinSafeLogonSoloConfig

File View Help

License : SCSOLO-100-ALMEX LTD P-0001-0020

Enter PIN: [masked]

Confirm PIN: [masked]

Account: philippe

Password: [masked]

Confirm Password: [masked]

Confirm

Status 2/19/2006 10:10 AM

1. Type into the fields “Enter PIN:” and “Confirm PIN:” the new PIN code for the card holder
2. Type into the field “Account” the actual account name setup in Windows
3. Type into the fields “Password:” and “Confirm Password:” the actual account password setup in Windows.
4. Click on the “Confirm” Button
5. The System will display a dialog box notifying you a success.

The card is now reader to be used by the client software. You may now exit the application or program a new card.

If you have not done so, remember to complete steps 9 and 10 of the Installation section.

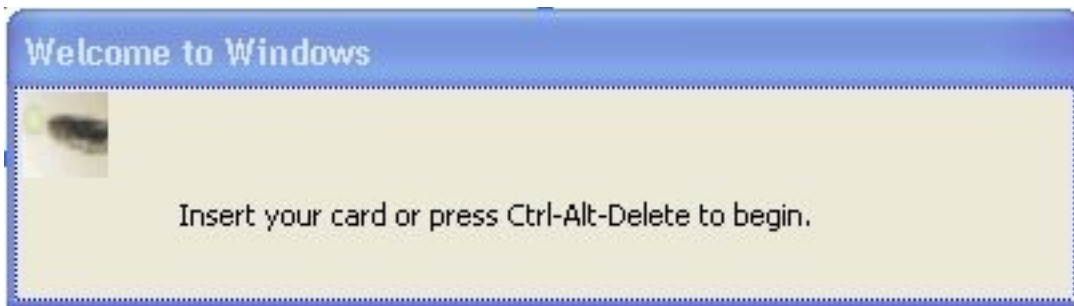
⁴ For a new card the fields “Account:”, “Password:” and “Confirm Password:” will be empty by default whereas the fields will be filled up automatically in the case of an already programmed card.

Client Software

This version of WSLS is compatible with PC that only have one Smart Card reader installed.

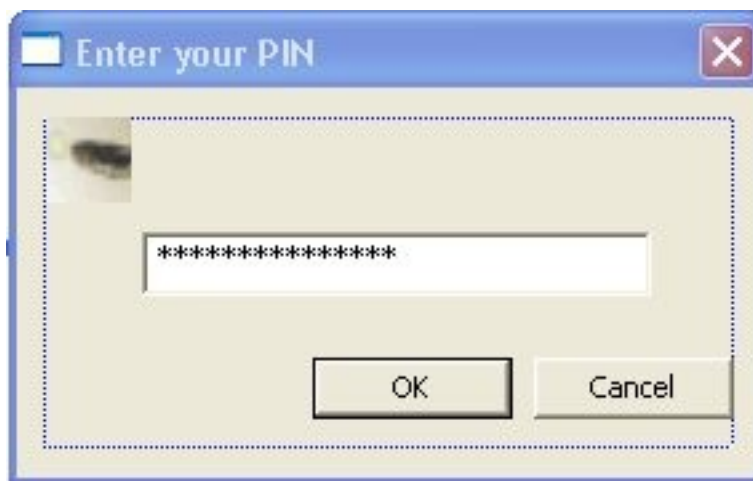
Main Screen

Once installed, WSLS will be operational **as soon as you reboot your PC**. Instead of the usual dialog box that lets you enter your user name and password and select your domain, the following simple window will appear:



Enter PIN

If a legal Smart Card is inserted in the first PCSC reader, the following window will appear:



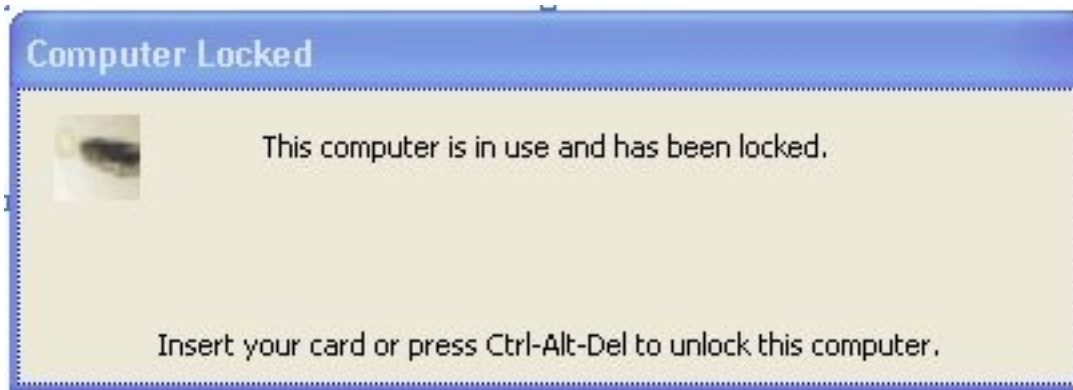
Simply type in your Logon card PIN (the one defined on page of this document) and WSLS will log you onto your windows environment. ⁵

Note: Your logon card will only accept up to 5 wrong PIN codes before it blocks itself: once blocked, the card needs to be assigned a new PIN code using the procedures described on page .

⁵ Please refer to the Technical Notes section to understand the behavior of the Smart Card in case of incorrect PIN code usage.

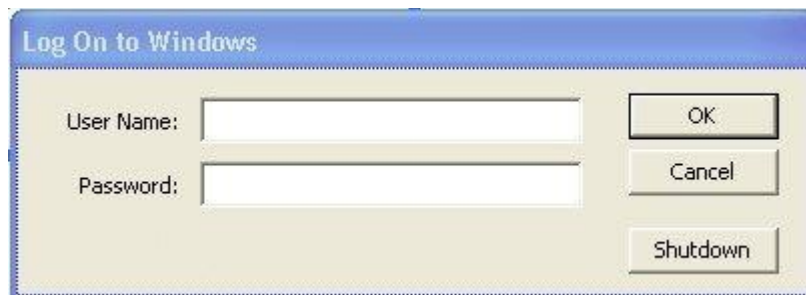
Smart Card lock

If you decide to remove your card from the reader, WSLS will lock your windows session and give you the option of logging off or inserting your card once more and typing your PIN code again to restore your session.



Regular Logon

If instead of inserting your card, you wish to enter all information by hand as you used to (a system administrator might have many accounts), press Ctrl-Alt-Delete at the main window and type in your information in the usual way:



Technical Notes and troubleshooting:

- Windows XP-Home users: After rebooting the PC, the Windows Smart Card reader service takes a few seconds to start: if you insert your card in the reader as soon as the client software first dialog appears, the client software might not react right away. Wait a few seconds before inserting your card.
- PIN count: When a wrong PIN code is entered, the card increments an internal counter, when that counter reaches 5, the card locks up and is no longer functional. As long as that counter has not reached 5, entering the correct PIN code resets the counter to 0.
- **The logical connection between the Client Software and the Smart Card reader is established when the PC boots:**
 1. **If the Smart Card reader is connected later, the Client Software will not function: reboot the PC**
 2. **If the Smart Card reader is disconnected after the PC has booted, the Client Software will not function: reboot the PC**
 3. **If a notebook in power saving mode switches off the Smart Card reader power, the Client Software will not function: reboot the PC**